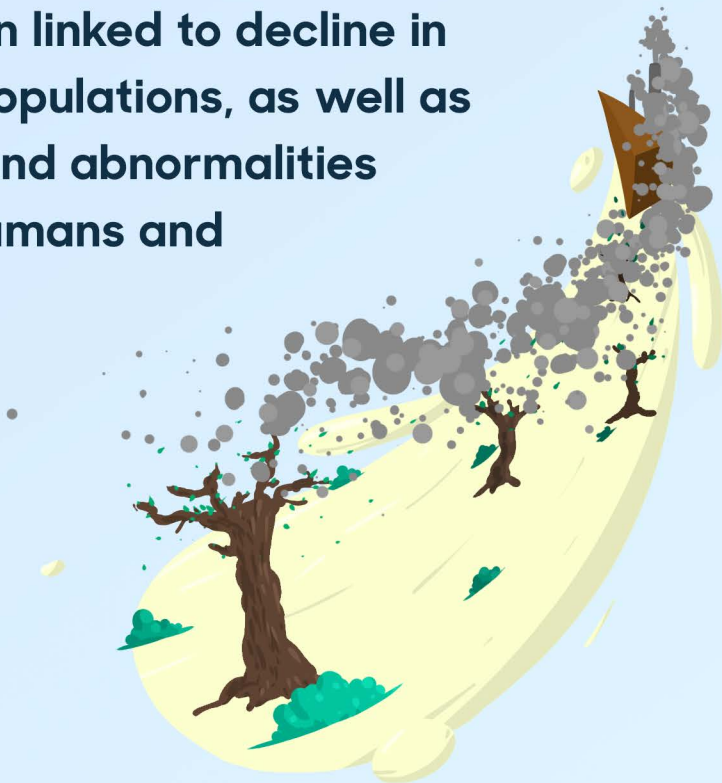


CHARACTERISTICS OF POPs?

POP's are a global problem because of its peculiar characteristics. These characteristics include:

TOXIC

POP's are hazardous to both human health and the environment, and have been linked to decline in wildlife populations, as well as disease and abnormalities in both humans and wildlife.



MOBILE

Can be transported over long distances via water, and air.



PERSISTENT

POP's persist for a very long time in the environment; it may take them decades or even centuries to be degraded.



BIO-ACCUMULATIVE

POP's are absorbed by animals and increase in concentration further up the food chain.

